



## INSTALLATION SUPPLEMENT

### VISTA-40, VISTA-50P, VISTA-50PUL

## E2 ZONE PROGRAMMING

### A New Zone Programming and 5800 Wireless Device Enrollment Procedure

*Important! Replace the existing procedures in your Installation Instructions with these instructions*

#### **Control Panels Affected**

- Vista-40
- Vista-50P

#### **Summary of Changes**

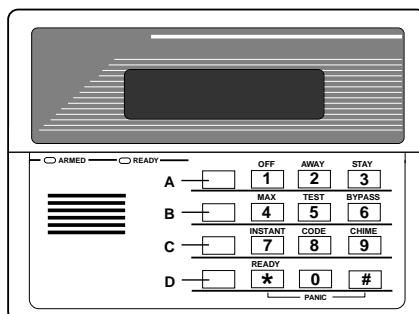
##### **Enhanced Zone Programming Mode**

- Combined transmitter Serial number and Loop number entries on one screen.
- Provided the ability to enter transmitter serial number, loop number, and confirmation in one step by transmitting multiple times.
- Added a message to indicate that you are in a Confirmation Mode.
- Added the ability to copy the serial number from a previously entered zone (for multiple zone transmitters), and then edit the loop number.
- Added the ability to edit and delete a serial number at the input serial number prompt.
- Added software to default to Contact ID format; removed fields 1\*80, 1\*81, 1\*82, and 1\*83, Customized Dialer Format defaulting.
- Removed the use of a “program tool” for programming transmitters.
- Removed field 1\*32, RF Receiver Type; only 5881 type receiver can be used.

##### **Added Expert Programming Mode**

*The new Expert Mode allows you to:*

- Program zone attributes on a single screen.
- Copy zone attributes from the last zone saved.
- Copy a serial number from the last serial number saved.
- Edit and delete a serial number at the input serial number prompt.
- Enroll wireless keys using pre-defined default templates.



The 6139 alpha keypad is shown at left. Note the locations of the A, B, C, and D keys in particular, which are used in conjunction with other keys during programming.

## Enhanced Zone Programming

For Vista-40, replace the current "Zone Programming" instructions in the \*93 MENU MODE PROGRAMMING section of the Installation manual with the procedures in this document. For Vista-50P, the following procedures replace the current "Zone Programming" and "Serial Number Learning" in the \*93 MENU MODE PROGRAMMING section of the Installation manual.

Enter Programming Mode [**Installer Code**] + **8 0 0**.

Then do the following before programming your zones:

1. Program field **2\*00: Number of Partitions**, as necessary.
2. Enable your 5800 RF receiver in Device Programming menu mode **if using wireless devices**  
*Note:* 5881 series RF receivers are the only type of receivers that can be used in the system.

**To program your zones, press \*93 to display the "ZONE PROG?" prompt.**

ZONE PROG?  
 1 = YES    0 = NO

SET TO CONFIRM?  
 1 = YES    0 = NO

ENTER ZONE No.  
 00 = QUIT                      10

10	ZT	P	RC	In	L
	00	1	00	-	-

10	ZONE TYPE	
	PERIMETER	03

1. Press **1** to enter Zone Programming. Once in this mode, press [\*] to advance to the next screen. Press [#] to display the previous screen, if necessary.

This prompt will appear. If "Yes," Confirmation prompts are displayed after the device's Serial and Loop numbers have been entered.

Enter the 2-digit zone number to be programmed. Zone 10 is shown entered in the example at the left.

Protection Zones = 01– XX, (where XX = the max. zone number)

Keypad Panic Zones = 95, 96, 99.

Press [\*] to continue.

2. A summary display of the zone's current programming will appear. **ZT** = Zone Type, **P** = Partition, **RC** = Report Code, **In** = the input type of device, and **L** = the device's loop number to which the sensor is connected.

Press [\*] to continue.

3. Enter the zone response type desired (or change it, if necessary). Available zone types are listed below.

00 = Assign for Unused Zones	08 = 24-Hr. Auxiliary
01 = Entry/Exit #1, Burglary	09 = Fire Without Verification
02 = Entry/Exit #2, Burglary	10 = Interior Delay, Burglary
03 = Perimeter, Burglary	20 = Arm–STAY†
04 = Interior Follower, Burglary	21 = Arm AWAY†
05 = Trouble Day/Alarm Night	22 = Disarm†
06 = 24-Hr. Silent Alarm	23 = No Alarm Response
07 = 24-Hr. Audible Alarm	

† These are special zone types used with 5800 series wireless push-button units which will result in arming the system in the STAY or AWAY mode, or disarming of the system, depending on the selection made.

Refer to the *Zone Type Definitions* section in your installation manual for a detailed description of each zone type.

Press [\*] to continue.

10	PARTITION	
		2

4. Enter the partition number you are assigning this zone to. Press [\*] to continue.

10	REPORT CODE	
	1ST 01 2ND 00	10

5. Enter the report code. The report code consists of 2 hexadecimal digits, each in turn consisting of 2 numerical digits. For example, for a report code of "10," enter 01 and 00.

(Refer to the *System Communication* section for more information about report codes and report code formats.)

Press [\*] to continue.

10 INPUT TYPE	
NONE	00

Note that input types 4 & 5 are valid for certain 5800 series transmitters only (e.g., 5801, 5802, 5802CP & 5804).

6. Enter the input device type as follows:
  - 00 = not used
  - 01 = hardwired
  - 03 = supervised RF transmitter (RF type)
  - 04 = unsupervised RF transmitter (UR type)
  - 05 = RF button-type transmitter (BR type)
  - 06 = serial number polling loop device (SL type)
  - 07 = DIP switch-type polling loop device
  - 08 = right loop of DIP switch-type device.

**Note:** If Input Type 01, 07, or 08 was entered, the summary display will appear.

Right loops refer to the use of the right loop on a 4190WH Zone Expander Module and/or 4278 PIR, which allow hardwired devices to be monitored by the polling loop.

Press [★] to continue.

If programmed hardwired, or DIP switch polling loop, the summary display will appear.

10 INPUT S/N	L
AXXX-XXXX	1

### 7. Serial Number Entry and Loop Number Entry.

*Used only when enrolling wireless transmitters.*

- a. Transmit two open and close (or close and open) sequences. For a button-type transmitter, press and release the button, wait approximately 4 seconds, then press and release the button a second time.

OR

- b. Manually enter the 7-digit serial number printed on a label on the transmitter, using the Alpha keypad. Then press the [★] key — the cursor will move to the “L” position. You can edit the loop number, if necessary. When the loop number is acceptable, press [★].

OR

- c. Press key [C] to copy the last serial number enrolled (used when programming a transmitter with several input loops).

Press [★] to accept.

10 INPUT S/N	L
A022-4064	?

8. The cursor will then move to the Loop column (L) with the previous serial number displayed, and display a highlighted question (?) mark for the loop number.

Enter the loop number and press [★].

The system will then check for a duplicate serial/loop number combination.

If a duplicate serial/loop number combination is found, the keypad will emit a single long beep, and prompt with a “?” again for a different loop entry.

10 INPUT S/N	L
A022-4064	1

If the serial/loop number combination is not a duplicate in the system, a display showing the serial number and loop number entry will appear.

Press [★] to continue.

XMIT TO CONFIRM  
PRESS \* TO SKIP

9. **Confirmation Option:** *This prompt will only appear if you answered "Yes" in step 1.*

The system will enter a confirmation mode so that the operation of the actual programmed input can be confirmed. Activate the loop input or button that corresponds to this zone.

Entd A022-4063 2  
Rcvd A022-4064 2

**If the serial number/loop number combination transmitted does not match** the serial number entered, a display similar to the one at the left will appear.

If so, activate the loop input or button on the transmitter once again. If a match is not obtained (i.e., summary display does not appear), press the [#] key twice and then enter or transmit the correct serial number again.

**To Delete a Serial No** →

To delete an existing serial number, enter "0" in the loop number field. The serial number will change to "0"s.

10 INPUT S/N: L  
A000-000 0

If "0" was entered in error, simply re-enter the loop number or press [#], and the serial number will return to the display. Otherwise, press [\*] to accept.

Zn ZT P RC In L  
10 03 1 10 RF 1s

**If the serial number transmitted does match the serial number entered**, the keypad will beep 3 times and a summary display will appear, showing that zone's programming. Note that an "s" indicates that a transmitter's serial number has been enrolled.

Press [\*] to accept the zone information.

ENTER ZONE No.  
(00 = QUIT) 11

10. The system will return you to the "ENTER ZN No." prompt for the next zone.

When all zones have been programmed, enter "00" to quit.

Following the successful enrollment of each wireless device, remove ONE of the serial number labels from the device and affix it in the appropriate column on the worksheets provided (worksheets start on page 12); then enter the other information (zone number, loop number, zone type, etc.) relevant to that device.

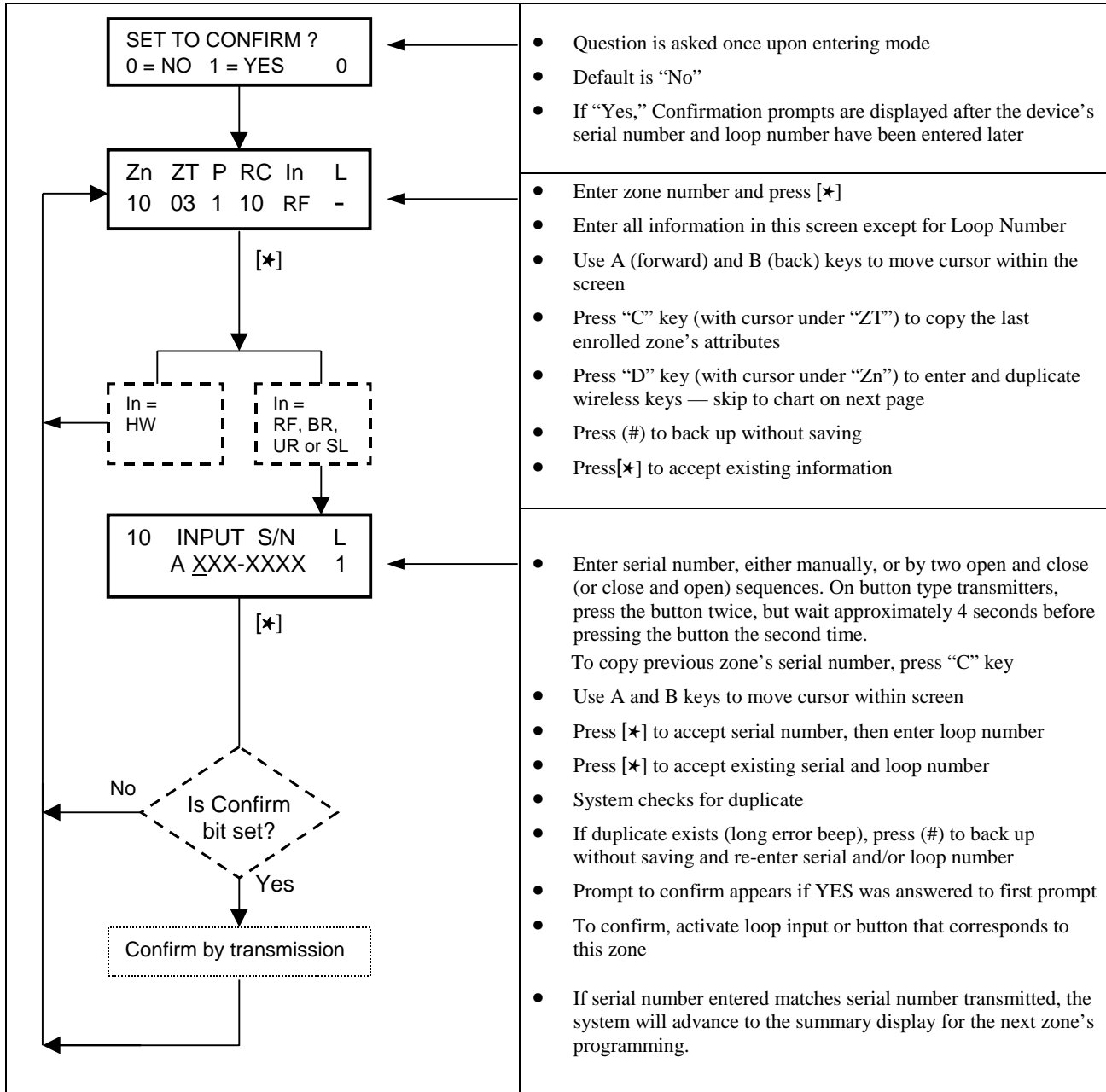


When you have finished programming all zones, test each using the system's Test mode. Do not use the Transmitter ID Sniffer Mode for this, as it will only check for transmission of one zone on a particular transmitter. It will NOT check the zones assigned to each additional loop, and will not verify polling loop type zones.

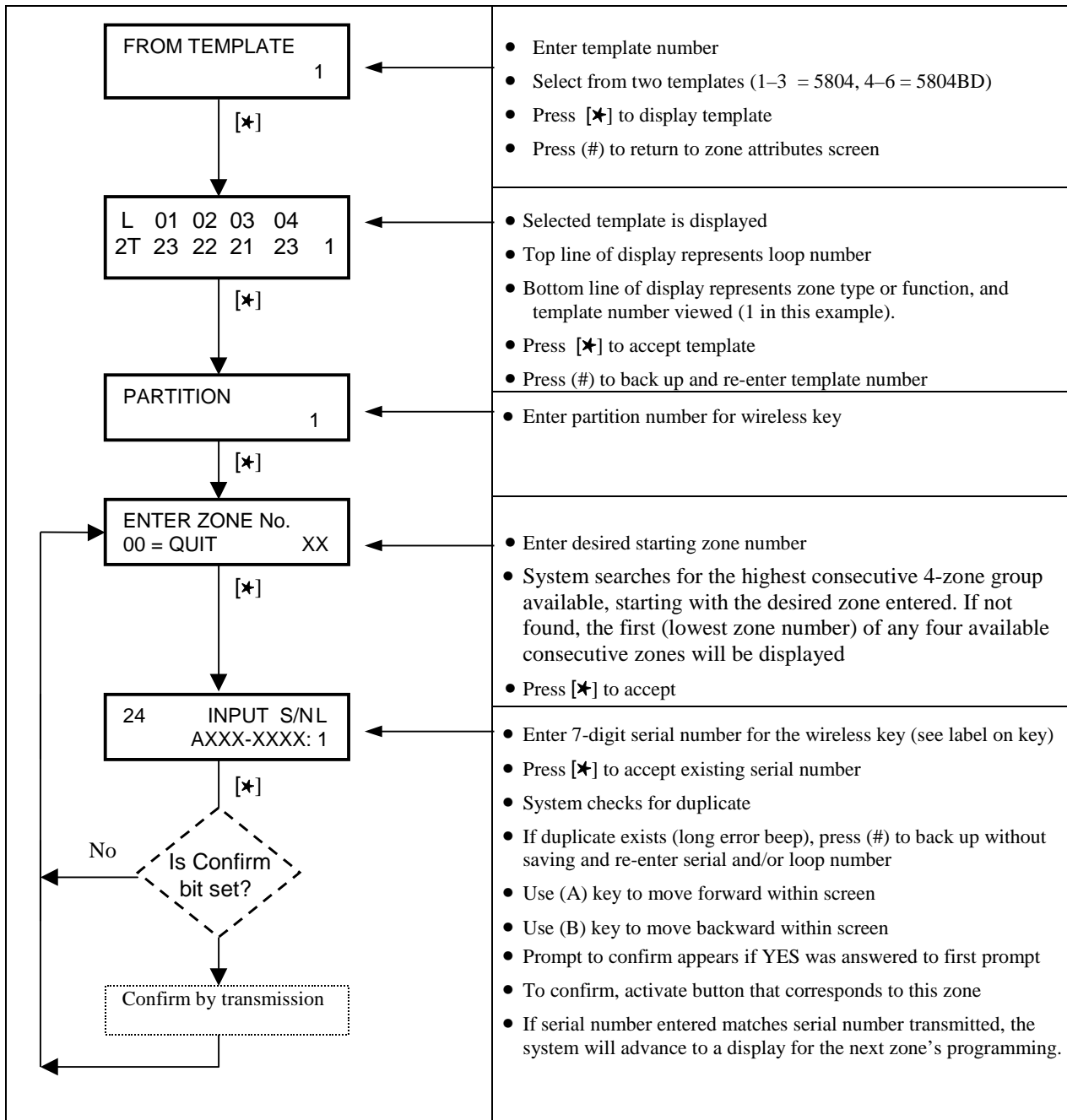
# Programming Zones through Expert Mode

## Summary of Expert Mode (\*93)

The following is a summary of the Expert Mode in the form of a flow chart. Step-by-step instructions for the Expert Mode follow this chart.



If the “D” key is pressed to enter and duplicate wireless keys, the following screens appear:



## Expert Mode \*93 (Step-by-Step Instructions)

The Expert Mode allows you to program zones using the minimum number of screens and keystrokes.

Enter Programming Mode **[Installer Code] + 8 0 0**.

Then do the following before programming your zones:

1. Program field **2\*00: Number of Partitions**, as necessary.
2. Enable your 5800 RF receiver in Device Programming menu mode if **using wireless devices**

*Note:* 5881 series RF receivers are the only type of receivers that can be used in the system

Proceed as follows.

Press \*93 to display the "ZONE PROG?" prompt. Enter "0" (N0) to each prompt until the "EXPERT MODE?" prompt appears.

EXPERT MODE? 1 = YES 0 = NO
--------------------------------

SET TO CONFIRM? 0 = NO 1 = YES 0
-------------------------------------

Zn ZT P RC In L
01 03 1 10 HW -

Zn ZT P RC In L
1_ - - - - -

Zn ZT P RC In L
10 03 1 10 RF -

Zn ZT P RC In L
10 03 1 10 RF -

\* If HW (hardwired) is entered for Input Device Type (In), the next screen will be similar to the above, except that HW will be displayed under "In." If RF, BR, or UR is entered, a prompt for serial and loop number will be displayed, as below.

10 INPUT S/N L
A XXX-XXXX -

1. Press 1 to enter Expert mode.
2. This prompt will appear upon entering Expert Mode. If "Yes," Confirmation prompts are displayed after the device's Serial and Loop numbers have been entered.
3. A summary screen will appear, showing zone "1"'s current programming or default values.  
If you want to use a Template to enter a wireless key, press the [D] key and go to the instructions on a following page under the title "Entering Wireless Keys." When the [D] key is pressed, a special prompt will be displayed which offers a series of default templates for wireless keys.  
Otherwise, **enter the first digit of the zone number** to be programmed, as shown at left.

4. **Enter the second digit of the desired zone number** (in the example on the left, zone 10 has been entered). The display will show that zone's current programming. Press [\*] to continue.
5. Enter all zone information except for Loop number. If desired, you can press the "C" key to copy the zone information on this screen from last enrolled zone, including Loop number (assuming you have previously enrolled at least one zone).  
  - ZT = Zone Type
  - P = Partition
  - RC = Report Code
  - In = Input Device Type\*
  - L = Loop number to which the sensor is connected.

NOTE: Do not press [\*] to advance through the Zone Type, Partition, Report Code, and Input Device Type fields. Press [\*] to go to the next screen after all values are entered.

On this screen,

- Use the [A] key to move to the right.
- Use the [B] key to move to the left and to back up to the "Zn" field.
- Use the [D] key if you wish to enter and duplicate wireless keys. See page 9 under "Entering Wireless Keys".

Press [\*] to accept the existing or newly- entered zone information.

6. Enter the serial number, using one of the following methods:
  - a. Transmit two open and close (or close and open) sequences. For a button-type transmitter, press and release the button, wait approximately 4 seconds, then press and release the button a second time.  
OR
  - b. Manually enter the 7-digit serial number printed on a label on the transmitter, using the Alpha keypad. Then press the [\*] key — the cursor will move to the "L" position. You can edit the loop number, if necessary. When the loop number is acceptable, press [\*].  
OR
  - c. Press key [C] to copy the last serial number enrolled (used when programming a transmitter with several input loops).

Remember, you can use the [A] key to move to the right or the [B] key to move to the left and to back up to the previous screen. You can also use the (#) key to back up without saving.

10	INPUT S/N	L
	A022-4064	1

- Press [\*] to accept the serial number and advance to the “L” position (if method “a” or “c” above was used), then enter the loop number.
- Press [\*] to accept the serial and loop number. If necessary, press the (#) key to back up without saving, and re-enter or edit the serial number before pressing [\*] to save.  
The system checks for a duplicate. If a duplicate exists, a long error beep will sound. If so, press the (#) key to back up and re-enter the serial and/or loop number.

**To Delete a Serial Number**

To delete the serial number, enter “0” in the loop number field. The serial number will change to all “0”s.

10	INPUT S/N	L
	A000-0000	0

If “0” was entered in error, simply re-enter the loop number, and the serial number will return to the display. . Otherwise, press [\*] to accept.

10	XMIT TO CONFIRM
	PRESS * TO SKIP

Entd	A022-4063	2
Rcvd	A022-4064	2

Zn	ZT	P	RC	In	L
11	03	1	10	RF	-

- The prompt to confirm appears.** *This prompt will only appear if you answered “Yes” in step 1.* To confirm, activate the loop input or button that corresponds to this zone.

**If the serial/loop number combination transmitted does not match the serial and loop number entered,** a display similar to the one at left will appear. If so, activate the transmitter’s loop input or button one or more times.

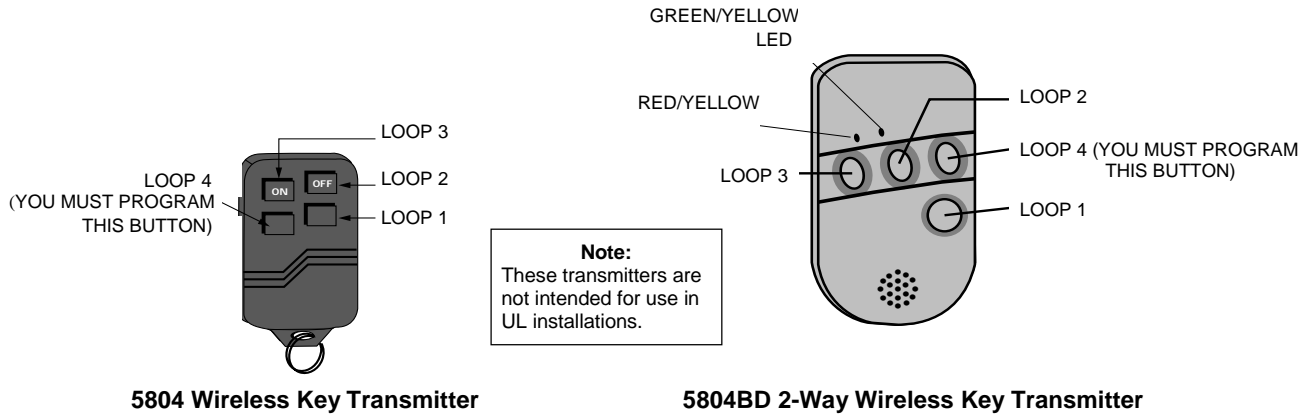
If a match is still not obtained (i.e., summary display does not appear), press the [#] key and enter the correct loop input or, if correct, press [#] again and then enter the correct serial number.

**If the serial number transmitted does match the serial number entered,** the system will beep 3 times and advance to the summary display for the next zone’s programming.

Following the successful enrollment of each wireless device, remove ONE of the serial number labels from the device and affix it in the appropriate column on the worksheets provided (worksheets start on page 12); then enter the other information (zone number, loop number, zone type, etc.) relevant to that device.



## Entering Wireless Keys



If the “D” key was previously pressed to enter defaults for 5804 and/or 5804BD wireless keys, the following screen will appear.

TEMPLATE ?	1
1-6	

1. Enter Template number (1–6).  
1–3 = 5804 templates; 4–6 = 5804BD templates. See the defaults provided for each template in the chart that follows these procedures.

L 01 02 03 04
2T 23 22 21 23 1

2. Select from templates. Press [★] to display template (template 1 shown selected).  
**Note:** If necessary, press [#] to back up and re-enter template number.
3. Press [#] if you want to return to zone attributes screen.
4. When [★] is pressed, the selected template will be displayed.  
Top line of display represents loop numbers, bottom line represents zone type. Also shown on the bottom line is the template number selected (1 in this example).
5. Press [★] to accept template.

PARTITION	1
-----------	---

6. Enter Partition number (if applicable) for wireless key.  
Press [★] to continue.

ENTER ZONE No.	22
00 = QUIT	

▲  
Example of zone No. suggested by the system. This indicates that zones 22, 23, 24, and 25 are available.

7. The system will search for the highest available, consecutive 4-zone group, (the four zones required for the 5804 and 5804BD), and display the lowest zone number of the group.  
If you want to start at a different zone, enter the zone desired, and press [★].  
If that zone number is displayed, the system has the required number of consecutive zones available, beginning with the zone you entered. If not, the system will again display a suggested zone that can be used.  
If the required number of consecutive zones is not available at all, the system will display “00”.  
Press [★] to accept.

INPUT S/N L	Axxx-xxxx
-------------	-----------

8. To enter the serial number:  
Press and release a button on the wireless key.  
OR  
Manually enter the serial number printed on the device’s label, using the Alpha keypad.
9. Press [★] to accept the serial number. The system will check for duplicate. If a duplicate exists, a long error beep will sound. If so, press [#] to back up without saving, and re-enter serial number.  
Use the A key to move forward within the screen, and the B key to back up.

XMIT TO CONFIRM  
PRESS • TO SKIP

10. If YES was entered at the SET TO CONFIRM prompt previously (see first prompt following entry into the **Expert Programming Mode**), the display on the left will appear.

To confirm, activate the button on the wireless key that corresponds to this zone.

Keyd A022-4063  
Rcvd A022-4064

11. **If the serial number transmitted does not match the serial number entered, a display similar to the one at left will appear**

If so, activate the loop input or button on the transmitter once again. If a match is not obtained, press the [#] key and then enter the correct serial number.

12. **If the serial number transmitted matches the serial number entered, the system will beep 3 times and advance to step 7 to enter the starting zone for the next wireless key.**

If no further programming is required, press "00" to quit.

**After you have enrolled each wireless device, remove ONE of the serial number labels from that device and affix it in the appropriate column on the worksheets provided (worksheets start on page 12); then enter the other information (zone number, zone type, etc.) relevant to that device.**

### Wireless Key Default Templates

For 5804				For 5804BD			
TEMPLATE 1	<b>Loop</b>	<b>Function</b>	<b>Zone Type</b>	TEMPLATE 4	<b>Loop</b>	<b>Function</b>	<b>Zone Type</b>
	1	No Response	23		1	No Response	23
	2	Disarm	22		2	No Response	23
	3	Arm Away	21		3	Arm Away	21
	4	No Response	23		4	Disarm	22
TEMPLATE 2	<b>Loop</b>	<b>Function</b>	<b>Zone Type</b>	TEMPLATE 5	<b>Loop</b>	<b>Function</b>	<b>Zone Type</b>
	1	No Response	23		1	No Response	23
	2	Disarm	22		2	Arm Stay	20
	3	Arm Away	21		3	Arm Away	21
	4	Arm Stay	20		4	Disarm	22
TEMPLATE 3	<b>Loop</b>	<b>Function</b>	<b>Zone Type</b>	TEMPLATE 6	<b>Loop</b>	<b>Function</b>	<b>Zone Type</b>
	1	24-hour Panic	07		1	24-hour Panic	07
	2	Disarm	22		2	Arm Stay	20
	3	Arm Away	21		3	Arm Away	21
	4	Arm Stay	20		4	Disarm	22

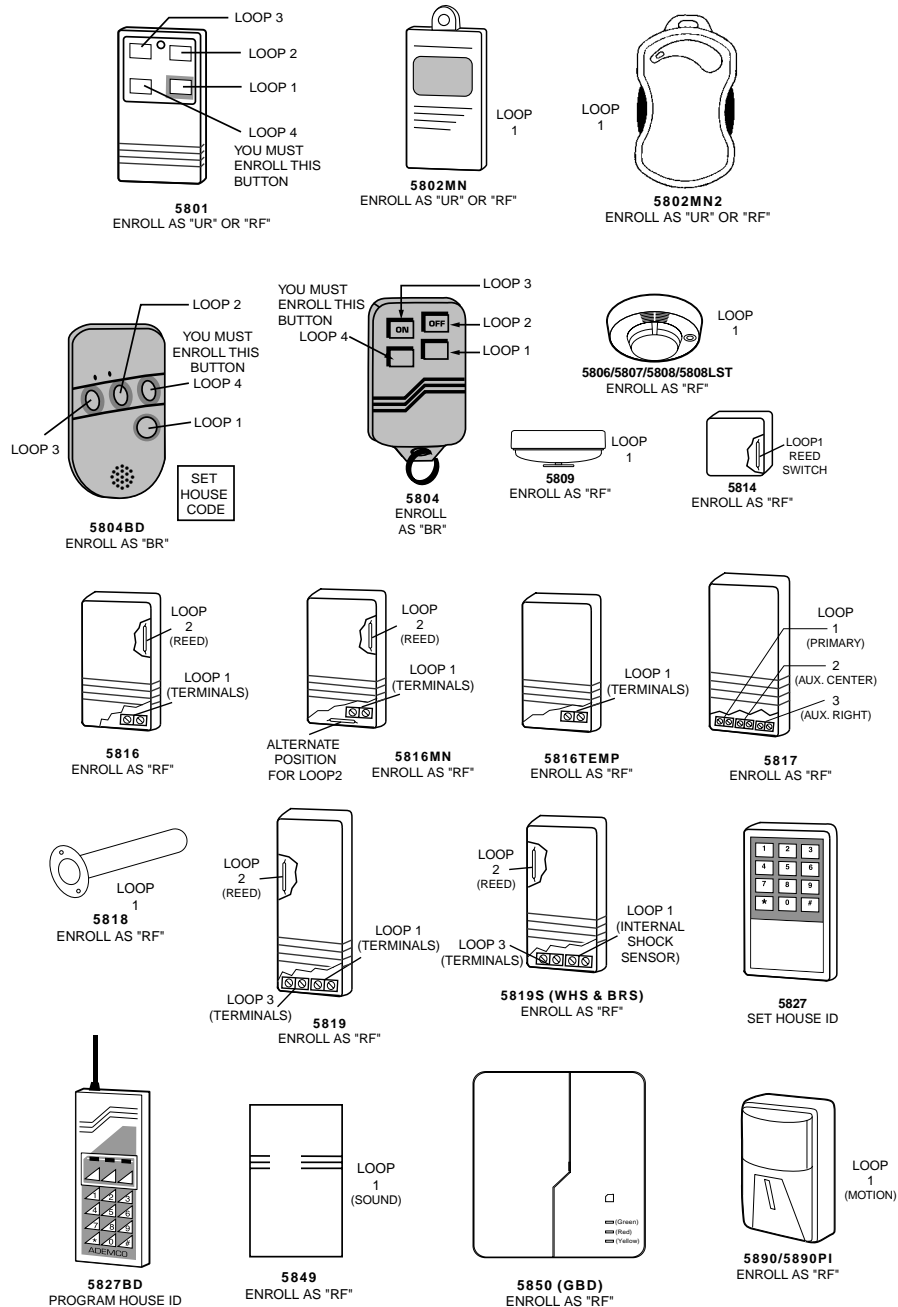
## 5800 Series Transmitter Input Loop Identification

- All of the transmitters illustrated below have one or more unique factory assigned input (loop) ID codes. Each of the input loops requires its own programming zone (e.g., a 5804's four inputs require four programming zones).
- Transmitter inputs entered as:

**"RF" (Supervised RF) Type** send periodic check-in signals, as well as fault, restore and low battery signals. The transmitter must remain within the receiver's range.

**"UR" (Unsupervised RF) Type** send all the signals that the "RF" Type does, but the control does not supervise the check-in signals. The transmitter may, therefore, be carried off-premises.

**"BR" (Unsupervised Button RF) Type** only send fault signals. They do not send restore or check-in signals. They will indicate a low battery condition when tested or activated normally. The transmitter may be carried off-premises.



**Note:** For information on any transmitter not shown above, refer to the instructions accompanying that transmitter for details regarding loop numbers, etc.

**UL NOTE:** The following transmitters are not intended for use in UL installations:  
**5802MN, 5802MN2, 5804, 5804BD, 5814, 5816TEMP, 5819, 5819WHS/BRS, 5827BD, and 5850.**

### ZONE PROGRAMMING WORKSHEET

ZONE No.	ZONE TYPE	PARTITION No. (if applicable)	ZONE INPUT TYPE	SERIAL No. (if applicable) Affix Serial No. Label from Transmitter Here	LOOP No.	DEVICE LOCATION

### ZONE PROGRAMMING WORKSHEET

ZONE No.	ZONE TYPE	PARTITION No. (if applicable)	ZONE INPUT TYPE	SERIAL No. (if applicable) Affix Serial No. Label from Transmitter Here	LOOP No.	DEVICE LOCATION

# ZONE PROGRAMMING WORKSHEET

ZONE No.	ZONE TYPE	PARTITION No. (if applicable)	ZONE INPUT TYPE	SERIAL No. (if applicable) Affix Serial No. Label from Transmitter Here	LOOP No.	DEVICE LOCATION

# ZONE PROGRAMMING WORKSHEET

<b>ZONE No.</b>	<b>ZONE TYPE</b>	<b>PARTITION No. (if applicable)</b>	<b>ZONE INPUT TYPE</b>	<b>SERIAL No. (if applicable) Affix Serial No. Label from Transmitter Here</b>	<b>LOOP No.</b>	<b>DEVICE LOCATION</b>

**ADEMCO**  
**GROUP**

**165 Eileen Way, Syosset, New York 11791**

Copyright © 1999 PITTWAY CORPORATION



K4247 12/99